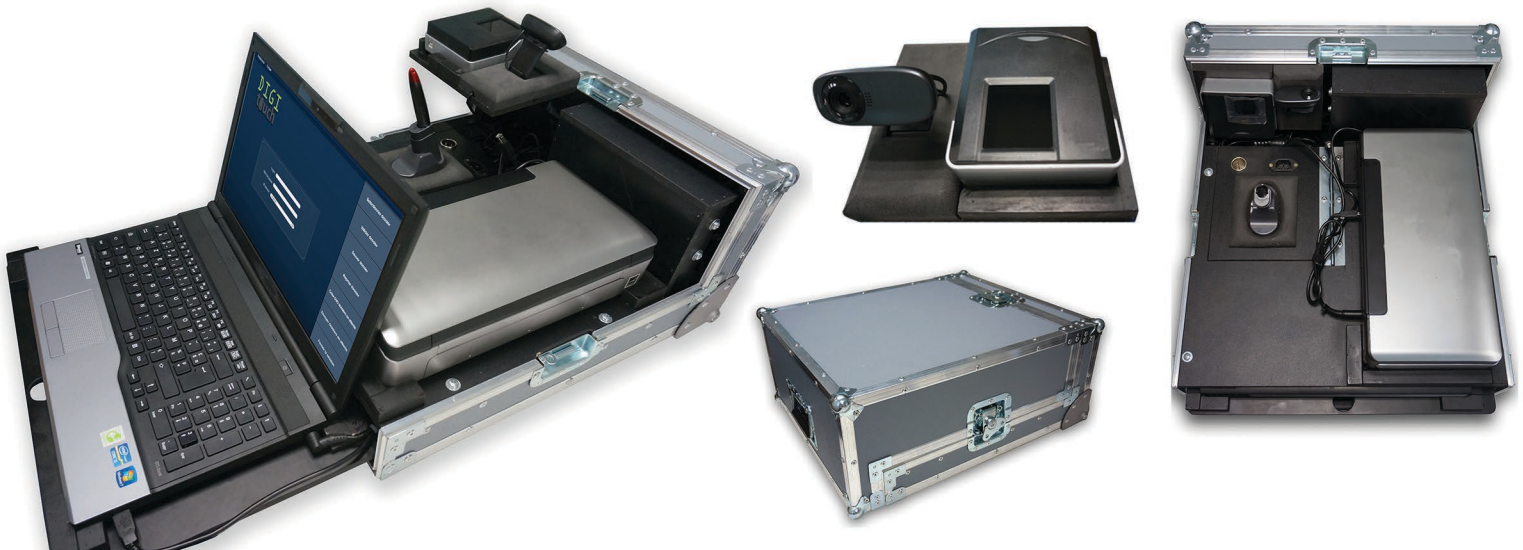


The Enrollment Suitcase

DIGI touch



The enrollment suitcase DIGITOUCH is the ideal tool for the census operations of people and goods, with the objective of creates or updates the files of civil status, constitution of electoral lists, the enrollment of individuals for issuing official documents:

- Identity card
- Health card
- Driver's license
- Vehicles registration
- Passport
- Electoral card
- Civil status
- etc etc etc

This enrollment suitcase is thought to satisfy all of the requirements of data recollection in the field, in tough environments and with a minimum of training. It is easily customized, and it allows entering data like civil status, scanning supporting documents by the scanner attached, capture fingerprints according to the standard ISO/IEC 19794-2:2005 and the portrait as recommended by the standard OACI DOC9303. Also, the printing of a receipt or a card is possible when connected to a printer.

The enrollment suitcase station is easily integrated in a transportable suitcase that allows the use of all the equipment from the moment of its opening without a complicated installation.

This enrollment suitcase station is the result of the mix from the latest technologies of digital acquisition, the knowledge of several international experts in biometric enrollment and the technologies of identity cards printing, so that the enrollment time effective is reduced.

A digitalization system of scripts documents allows to fast and natural enter the alphanumeric information needed to the databases: the data entering is made without any complementary insert information thanks to the OCR processing.

Captures 2, 6 or 10 fingers thanks to a spectrum of adapted captors: capture of one finger, capture of two fingers, or captor 4-4-2.

A quality control is achieved, also a search for double data entry in the local based station. The image capture is made by one camera HD and the framing of the face its automatically done respecting the OACI DOC9303 recommendations.

The connection to a central AFIS is possible if available an internet connection (safe connection). The access to safe data is made trough Login/Password or Login/Fingerprints.

Technical features:

- Laptop.
- Power plug for home and car.
- Optical fingerprints captors of 1, 2 or 4 fingers as demanded.
- Camera HD.
- Printer according to issue document.
- Equipped suitcase with wheels, which contains all the equipment ready for use. IP 54 when closed.
- Slot for photograph panel.
- Complementary screen for visualization of 10" (optional).
- Double-face document scanner (optional).



File format:

- Files in format XML, ANSI/NIST.
- Encrypted data with robust encoding algorithms.
- Fingerprint images in format WSQ or JPEG 2000, 500DPI.
- Picture size 240x320 in format JPEG, JPEG 2000.
- Other formats on demand.



Data transfer:

- Ethernet connection 802.3
- WIFI connection
- GPRS/3G Connection ion demand
- DVD burner

